

2025

# ANNUAL REPORT

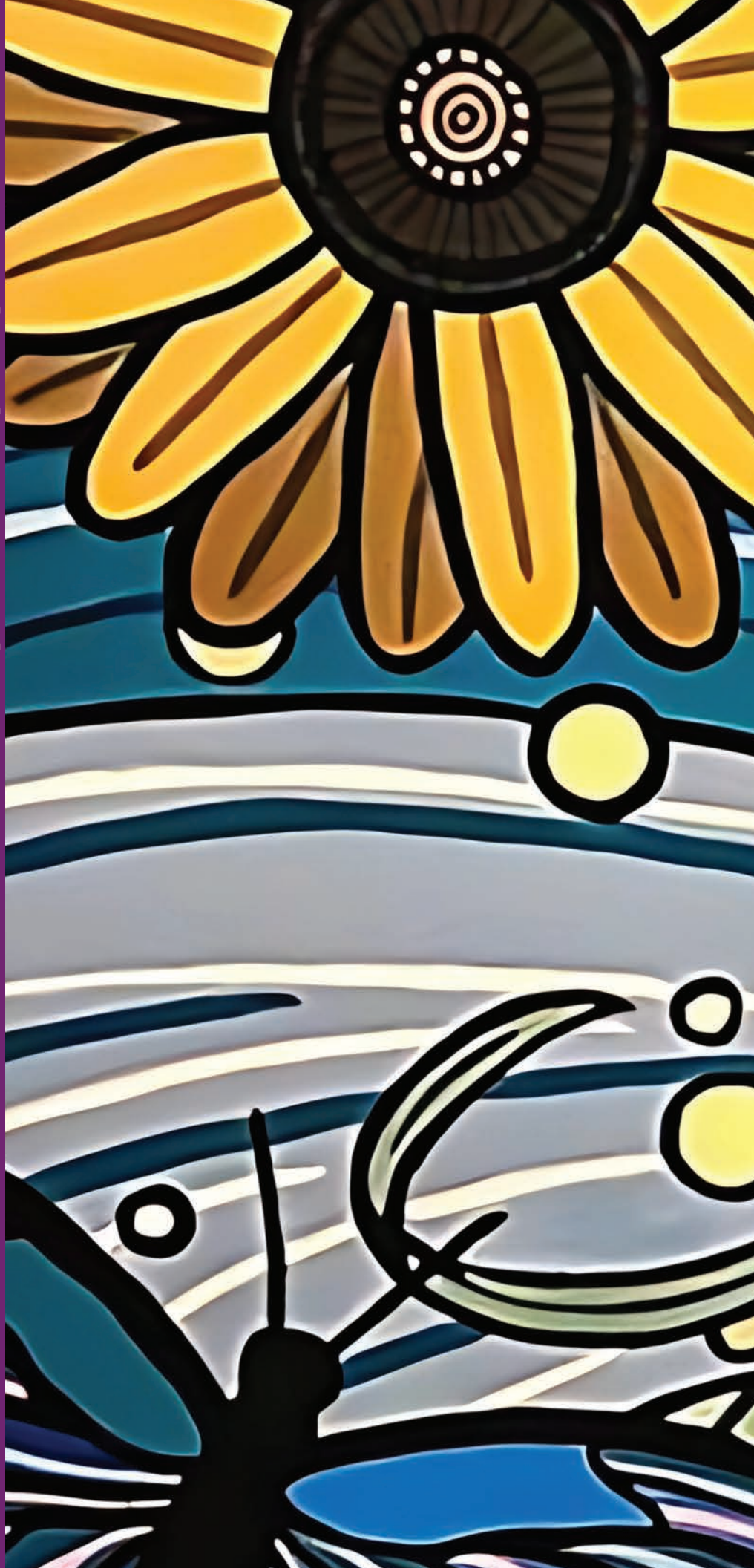


DOMESTIC VIOLENCE SHELTER  
AND PREVENTION CENTER

*A Ministry of the Franciscan Sisters of Chicago*

12490 Marshall St,  
Crown Point, IN 46307  
219.662.7066

[www.stjudehouse.org](http://www.stjudehouse.org)



**everyone**  
**deserves to**  
*be safe*

We believe every person deserves to live free from fear. We provide shelter, support and advocacy for survivors of domestic violence, empowering individuals and families to rebuild their lives with dignity and hope.

## **A YEAR OF GROWTH, TRANSITION, AND RENEWED COMMITMENT**



This was a year of growth, transition, and renewed commitment at St. Jude House. Since stepping into the Executive Director role last September, I've had the privilege of working

alongside a dedicated team to strengthen our foundation and expand our impact.

We transitioned from a 30- to 45-day emergency shelter model to a flexible, extended-stay approach. This shift allows survivors to create personalized stability plans that foster healing and independence. It reflects our deepened commitment to trauma-informed care and long-term recovery.

Additionally, our new Transitional Housing Program bridges the gap between emergency shelter and permanent housing. With two families currently enrolled and a third on the way, we're providing safe, stable environments for survivors to rebuild their lives. We've also applied for additional funding to expand this vital initiative.

Several physical improvements were made this year to enhance comfort and safety, including new door locks, ceiling fans, TVs and a water bottle filling station.

And we have added to our staff, with the hiring of a Volunteer and Outreach Coordinator, we've reinvigorated our volunteer program. Our inaugural Volunteer Recognition Breakfast in July celebrated the incredible contributions of those who support our mission.

Together, these accomplishments reflect a year of meaningful progress and renewed purpose. We are deeply grateful to our staff, volunteers, partners and community for their unwavering support as we continue to empower survivors and build a future rooted in healing and hope.

*Anna M. Schoon*

Anna M. Schoon, Executive Director

# 2025 year in review



Individuals  
Served



Individuals  
Served by the  
Mobile Advocate



Nights of  
Shelter

## a year of progress

This year brought meaningful growth and milestones for St. Jude House. From expanding critical services to strengthening our team and technology, these highlights showcase the progress behind our mission.

### Health First Grant

We were awarded a grant to offer medical and mental health care on-site. This includes hiring a therapist - fulfilling a long-standing goal and adding critical support services for survivors.

### Employee Engagement

St. Jude House met the benchmarks to be designated a Community of Choice for employee engagement and satisfaction - a testament to our supportive and mission-driven workplace culture.

### Technology Upgrades

Recognizing the need for improved connectivity and virtual collaboration, we secured funds to upgrade our technology. These enhancements included faster internet, laptops, docking stations, monitors for staff, and hybrid meeting capabilities - ensuring our team is equipped to work efficiently and stay connected.

real stories,  
real lives

"I will forever be grateful to them. They never judged me, and brought so much clarity into my life. I love the staff and so does my daughter. It's a clean safe establishment and the staff is so friendly and helpful. Thank you St. Jude for being a community that genuinely cares about us in a world where we feel lost and broken. I can't speak for anyone else but you all left a stamp on my life."

- Latisha, DV Survivor

As of 2025, we've helped 30,000+ survivors over the past 30 years.

# supporting survivors *transforming lives*

---

We provide a full complement of services, including housing, food, counseling, legal advocacy, case management and educational programming.



# 2025 impact overview



## Emergency Shelter

We provide a secure, confidential space where survivors can rest, recover and access counseling, advocacy and case management tailored to each individual.



safe haven

205 49

Individuals Served

Average Stay (Days)



## Mobile Advocacy

We bring help directly to survivors - at home or in a safe community space offering crisis intervention, safety planning, legal advocacy, and emotional support.



Community Outreach

105

114%

Individuals Served

Growth in Referrals



## Transitional Housing

We support survivors as they move toward stability with rent assistance and goal-focused guidance, empowering tenants to achieve personal milestones and long-term independence.



pathways to independence

2

\$572k

Tenants Housed

In Funding Requests

# together we can transform lives

Through the support and partnerships of others, we are able to fulfill our mission and transform lives. By working together with community organizations, businesses and individuals, we create a stronger, more connected network of care for survivors of domestic violence.

## YOUR SUPPORT MAKES ALL THE DIFFERENCE

This year's progress was made possible through the dedication and compassion of the following groups and individuals, whose support makes our work possible every day and allows us to continue transforming lives.

### BOARD OF DIRECTORS

**John Vidal**  
Board Chair  
Ameriprise Financial

**Christina J. Miller**  
Vice President, Miller  
Sachs & Hess, PC

**Shreya Bhandari**  
Purdue University Northwest

**Steven Crockett**  
Lightways Hospice

**Aimee Gabbert**  
Boys and Girls Clubs  
of Northwest Indiana

**Carol Highsmith**  
Centier Bank (retired)

**Marla Hoyer-Lareau**  
Methodist Hospitals

**John Kratkoczi**  
Wintrust Bank

**Roxanne Olejnik**  
The Times Media Company

**Coleman Risch**  
NIPSCO

**Sister Jeanne  
Marie Toriskie**  
Franciscan Sisters  
of Chicago

**Regina Umanskiy**  
President & CEO,  
Franciscan Ministries

**Keisha White**  
Excel Center Gary

**Dianna Williams**  
White Castle

### DEVELOPMENT COMMITTEE

**Roxanne Olejnik**  
Committee Chair

**Arianna Baiz**

**Shvonne Barber**

**Curt Bowers**

**Samantha Calvillo**

**Aimee Gabbert**

**Jeannie Gouwens**

**Diana Jagiella**

**Carrie Kuck**

**Ryne Pishkur**

**Coleman Risch**

**Teri Wallace**

**Amy Watts**

**Keisha White**

**Dianna Williams**

### SURVIVOR COUNCIL

**Amy McCarthy**  
Council Chair

**Laura Bayne**

**Miscah Borum**

**Brianne Coleman**

**Melinda Kunst**

### COMMUNITY PARTNERS

**Prevail Partners**

**Ameriprise Financial**

**Apple Blossom Trails**

**Centier Bank**

**Ozinga**

**Empower Partners**



(Community Partners Continued)

Lerner & Rowe  
 NIPSCO  
 Advocate Partners  
 Crown Point Rotary  
 The Times Media Company  
 Wintrust  
 Support Partners  
 Dawn Brancheau  
 Foundation  
 First Financial Bank  
 HealthLinc  
 Hard Rock Casino  
 Northern Indiana  
 Strack & VanTil

**CYCLE BREAKER  
 SOCIETY**

Linda Brizendine  
 Dawn Cohn  
 Brianne Coleman  
 Melissa Donahue  
 Louis Dore  
 Tim Fealy  
 Chrisney Sigstad  
 Louise Standefer

**VOLUNTEERS**

Shvonne Barber  
 Pa Afleck  
 Rosemary Anderson

Nicki Angotti  
 Breanon Barsie  
 Laura Bayne  
 Brad Belush  
 Lenette Belush  
 Angela Bolden  
 Lois Borrmann  
 Mandy Bravo  
 Valerie Brincko  
 Cathy Brown  
 Matt Caldes  
 Dylan Carlin  
 Kelly Carroll  
 Sandy Casalin  
 Veronica Castellanos  
 Elyce Chavez  
 Madison Cochran  
 Bri Coleman  
 Julie Conley  
 Douglas Conley II  
 Paige Conquest  
 Richard Cooper  
 Caleb Cunningham  
 Austin Dearing  
 Tyler Dearing  
 Tyler Ellis  
 Davion Ervin-Pointdexter  
 Tim Fealy

Peggy Fletcher  
 Francisco G  
 Miriah Gabel  
 Jess Garcia  
 Arianna Gibbs Hall  
 Amanda Grady  
 Jessica Gutesha  
 Kayla Gwen  
 Alexandria Hagge  
 Toni Harris  
 Yesenia Hernandez  
 Stacey Hinko  
 Mike Jansma  
 Adam Keeton  
 Pam Key  
 Sindel Kiester  
 Melinda Kunst  
 Samantha Latham  
 Michelle LaTurner  
 Alex Leman  
 Amber Leman  
 Gabriella Majdandzic  
 Sylvia Moegallonez  
 Matt Mosley  
 Tamika Muhammed  
 Devin Nelror  
 Kristie Nichols  
 Dawn Nowak

Cat Ornelas  
 Deann Patera  
 Soledad Perez  
 Vienna Place  
 Carrie Quinn  
 Nancy Raisor  
 Jennifer Reed  
 Brian Rodell  
 Theresa Schmidt  
 Brinley Schreiber  
 Eric Schreiber II  
 Eric Schreiber III  
 Samantha Smith  
 Madison Staggs  
 Simona Stancheva  
 Shannon Stovall  
 Taylor Swart  
 Hailey Swinford  
 Maegan Thompson  
 Baleigh Thorn  
 Ron Valadez  
 Edith Valdes  
 Amanda Victor  
 Marlene Webster  
 Kris Wiling  
 Nate the Great Magician

We appreciate you  
thank you to  
our community partners



*A Ministry of the Franciscan Sisters of Chicago*

---

12490 Marshall Street  
Crown Point, IN 46307  
219.662.7066  
[www.stjudehouse.org](http://www.stjudehouse.org)